

Where?

This innovative programme is delivered through a mix of face to face sessions and virtual meetings with electronic submissions and feedback, making it possible for participants to be based anywhere in the world (providing there is internet access).

One-week residential sessions are held at the start of the first two semesters (September/October and January/February) in Prague. The rest of the programme is delivered at distance.

Admission requirements

- ▶ Letter of application evidencing motivation;
- ▶ 2 Letters of Recommendation from university professors;
- ▶ For non-native speakers proof of competence in the English language at B2+ level, unless they carried out their previous university studies predominantly in the English language;
- ▶ Curriculum Vitae;
- ▶ List of any previous publications (if applicable);
- ▶ **Fee: 6.000,- USD, early registration: 4.500,- USD + 200 USD application fee**
Scholarships may be available.



FOR MORE INFORMATION
VISIT OUR WEBPAGE

www.prf.cuni.cz/llm



Charles University is a well-respected institution in the heart of Europe. **It combines solid tradition, since welcoming its first students in 1348**, with modern innovations. It now offers a range of first degree, master's and doctoral programmes and attracts teachers and students from across the globe.

CONTACTS:

CHARLES UNIVERSITY

Faculty of Law
nám. Curieových 7
116 40 Prague 1
Czech Republic

www.prf.cuni.cz
llm@prf.cuni.cz



CHARLES UNIVERSITY
Faculty of Law



Univerzita Palackého
v Olomouci

LLM

and Certificate in Experiential Learning and Teaching



Charles University in Prague Faculty of Law
in cooperation with
Palacký University Olomouc Faculty of Law

Why and who?

Learning through experience coupled with structured and supported reflection is commonly recognised as good, perhaps best, educational practice. To equip graduates with the necessary knowledge, skills and attributes to better secure employment and make a meaningful contribution to society, whatever their discipline, a study context that requires the application of theory to practice is necessary.

This joint programme of Charles University and Palacký University is targeted at both lawyers and teachers who would benefit from a deeper understanding of innovative and effective experiential learning and teaching methods. New or more senior academics, lecturers, instructors, tutors or anyone with an active, guiding, role in education should benefit from participating in this course.

The first part of the programme (the Certificate) is focused on effective, interactive learning and teaching. The second part (leading to the full LLM) looks at a range of options that should enable aspirant, or current, lawyers to learn, teach and practice to optimum effect in a legal context.

At the end of the first semester all students on this course will have studied and put into practice the key elements of 'clinical' education. For non-lawyer teachers successful completion of this part of the programme will lead to a Certificate in Experiential Learning. Those satisfactorily completing the second part of the course will graduate with the LLM.

'Legal clinics' are now a frequently found component in many law schools, in civil as well as common law countries. This programme is unique in that it focuses on the rationale for and the design and delivery of 'hands-on' methods of studying from both educational and professional perspectives. Participants will benefit from working with each other and with highly experienced clinicians from a range of countries with established experiential learning programmes.

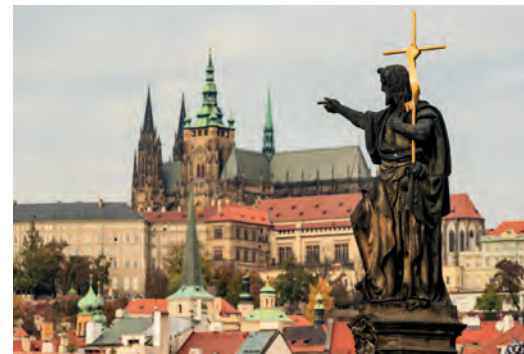
On completing the first part of the programme students should be equipped to design and deliver experiential learning classes in law or indeed any other course of study.

Those obtaining the full LLM will, subject to applicable professional practice rules, be able to set up and run law clinics.

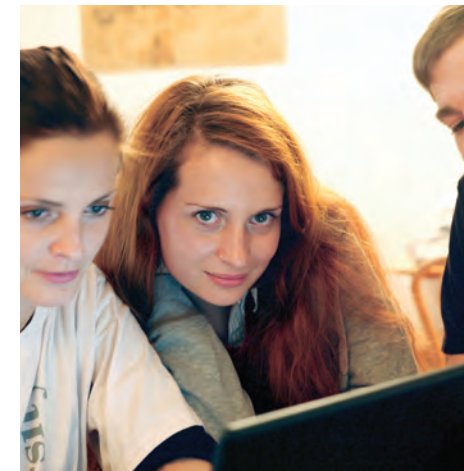
This course runs for 3 semesters although participants can have up to 5 semesters to complete the work making it possible to study and have other ongoing working or other commitments. The programme has already attracted participants from across the globe.

Because of the highly interactive nature of this programme – learning by doing not just by listening or watching – all students wanting to enrol will be fully briefed to ensure that they understand the nature of this LLM/Certificate. Students are likely to already have a good first degree but we will also consider those who have substantial work-based experience and who demonstrate their ability to undertake and commit to such a course of study.

Completion of this LLM may be a springboard to a PhD.



Study in
Kafka's City



What?

Not only do students on this LLM/Certificate address, in an applied way, the theories derived from educational 'best practice' and relevant professional rules but they also put those principles into effect through their supervised casework and the mentoring of others engaged in clinical classes.

The programme comprises of 4 compulsory modules that cover the main theoretical and professional practice considerations, followed by a range of electives that allow the students to use this framework in the context of specialist subjects.

To complete the LLM programme a thesis, on a subject of the student's choice, is required. The whole course focuses on effective and engaged learning and teaching and, more specifically, for lawyers, on improvements in access to justice.

When?

The programme begins with a residential week in September each year and was offered for the first time in September **2018**. It builds on years of prior experience of the teaching team but takes the study of clinic to a new level. It is delivered by experts in the field – academics and lawyers lead by **Professor Richard Grimes**.

